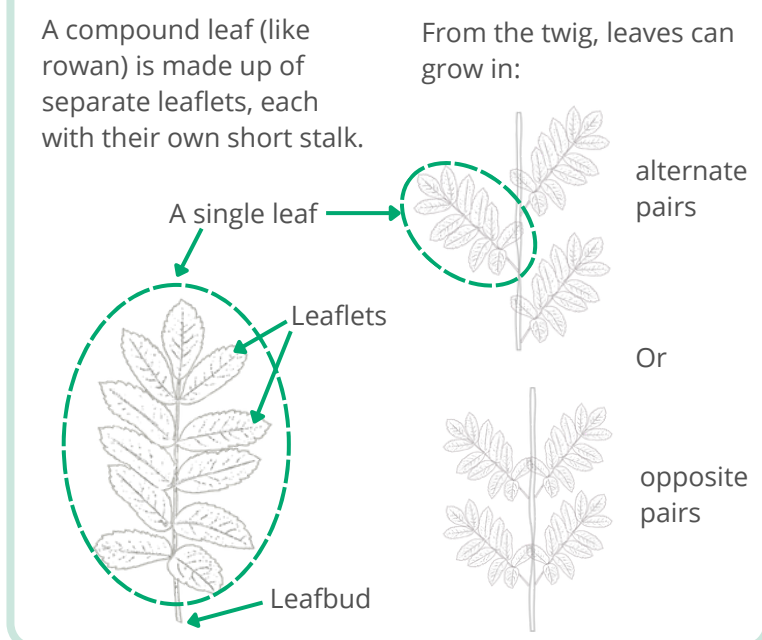


# TREE ID GUIDE

With an estimated 100 species of tree growing commonly in the UK, it can be difficult to tell an aspen from an alder or an elder from an ash. Use this guide to help you identify 23 tree species you might come across in your nearest green space. Top tip - don't mistake a leaflet for a leaf!





**ALDER** *Alnus glutinosa*

Short or medium-sized tree with spreading branches. Leaf glossy green with blunt tip, sometimes indented.



**CRAB APPLE** *Malus sylvestica*

Small tree with a tangled shape. Leaf oval with a rounded base and slightly pointed tip. Edge toothed



**HORNBEAM** *Carpinus betulus*

Medium-sized tree, often cone-shaped. Leaf oval with a pointed tip and prominent veins. Edges toothed.



**ROWAN** *Sorbus aucuparia*

Medium-sized tree. Compound leaf with 10-16 leaflets. The compound leaves grow in alternate pairs on the twig.



**ASPEN** *Populus tremula*

Tall narrow tree. Leaf grey-green, round, with wave-shaped teeth. Leaf stalks fattened, so leaves flutter and rustle in the breeze.



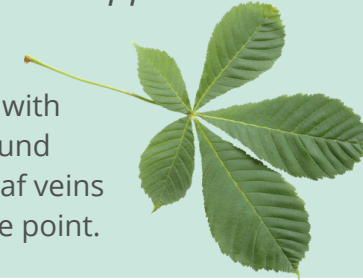
**ELDER** *Sambucus nigra*

Large shrub or small tree with a tangled shape. Compound leaf with 5-7 leaflets. Edge with forward-pointing teeth.



**HORSE CHESTNUT** *Aesculus hippocastanum*

Tall, dome-shaped tree with massive crown. Compound leaf with 5-7 leaflets. Leaf veins spread out from a single point.



**SWEET CHESTNUT** *Castanea sativa*

Tall upright tree, with lower branches almost reaching the ground. Leaf glossy green, long, edge with saw-tooth teeth.



**ASH** *Fraxinus excelsior*

Short or medium-sized tree with spreading branches. Leaf glossy green with blunt tip, sometimes indented.



**ELM** *Ulmus spp.*

Several different species. Leaf feels rough. Leaf base asymmetric: one side of the leaf base is shorter than the other.



**LIME** *Tilia spp.*

Tall tree. Several different species. Leaves thin, heart-shaped base, often with a pinched tip. Edge finely toothed.



**SYCAMORE** *Acer pseudoplatanus*

Tall, spreading tree with a broad domed crown. Leaf with 5 pointed lobes and a toothed edge. Leaf stem red.



**BEECH** *Fagus sylvatica*

Tall upright tree with a broad rounded crown. Leaf glossy green and round. Edge wavy but untoothed with fine white hairs.



**FIELD MAPLE** *Acer campestre*

Medium-sized tree with a rounded crown. Leaf dark green, with 5 rounded lobes and rounded teeth. Leaf stem green



**LONDON PLANE** *Platanus x hispanica*

Tall tree with a spreading crown. Leaf leathery, with 3 or 5 pointed lobes and a toothed edge.



**WHITEBEAM** *Sorbus aria*

Medium-sized tree. Several different species. Leaf glossy green on top but feltly white underneath. Edge sometimes lobed.



**BIRCH** *Betula spp.*

Medium-sized tree, narrow and tapering. Several species. Leaf small, triangle-shaped or heart-shaped. Edge toothed.



**HAWTHORN** *Crateagus monogyna*

Small tree or large shrub, common in hedges. Leaf dark green, deeply lobed into 2, 3 or 5 lobes, with toothed edge



**OAK** *Quercus spp.*

Tall tree, with a broad and spreading crown. Several different species. Leaf with 3-8 pairs of rounded lobes.



**WILLOW** *Salix spp.*

Shrub to medium-sized tree, sometimes weeping. Several different species. Leaves can be long and thin, or round.



**CHERRY** *Prunus spp.*

Small tree. Leaf is long oval shape with a pointed tip. Edge toothed. Look for 2 red spots at the top of the leaf stalk.



**HAZEL** *Corylus avellana*

Large shrub or small tree. Leaf hairy underneath, pointed tip and heart-shaped base. Edge double-toothed.



**POPLAR** *Populus nigra*

Medium to large tree with either columnar or rounded form. Bright green triangular or heart-shaped leaves. Edge finely toothed.



Guide created in partnership with



Visit [treesforcities.org](https://treesforcities.org) to learn more about urban trees and how you can get involved.

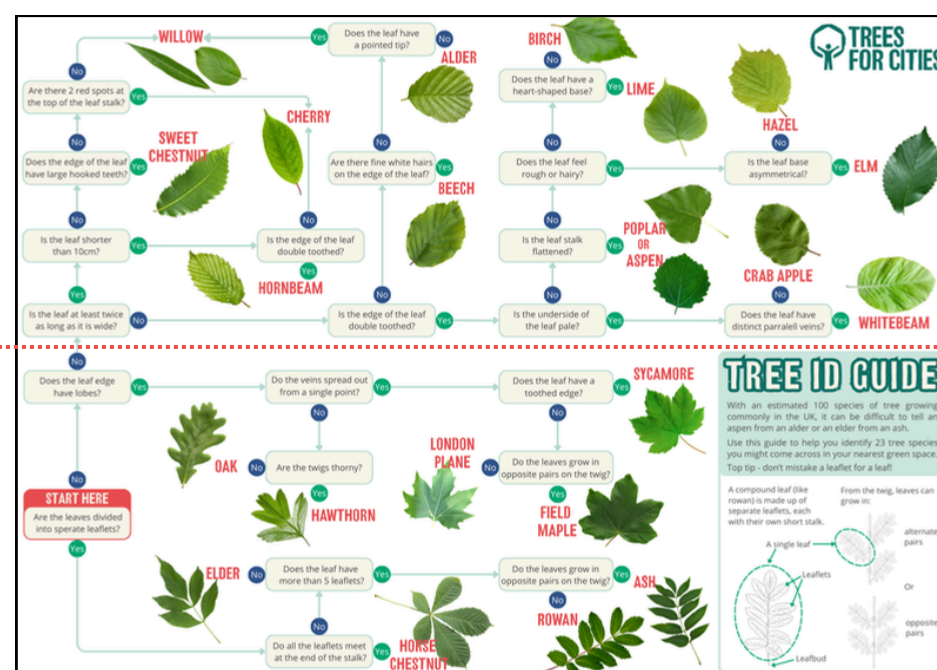
# POSTER TO POCKET GUIDE

You can keep me as a digital file on your phone or PC, print me as a poster for your wall or fold me into a handy pocket guide - the choice is yours!

To use me as a poster, I look best printed on A3 paper. Then it's just two easy steps to turn me into a pocket guide so you'll always know your horse chestnuts from your hawthorns.

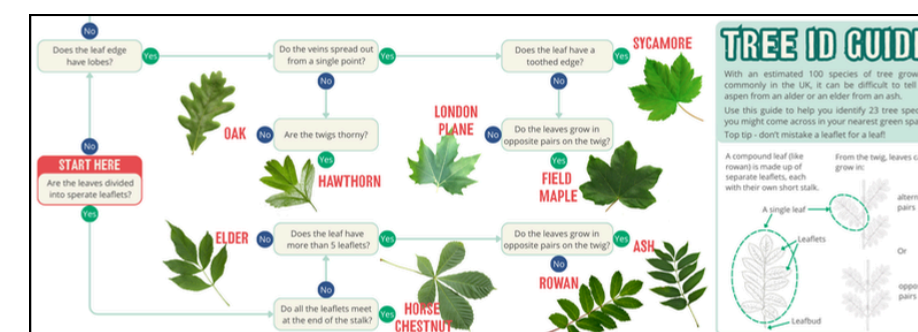
## STEP 1

Fold your A3 printed Guide in half lengthways along the red dotted line shown here.



## STEP 2

Fold the Guide in a concertina pattern into four equal sections. The Tree ID Guide title should be on the front page and the Start point on the back page.



ET VOILA!